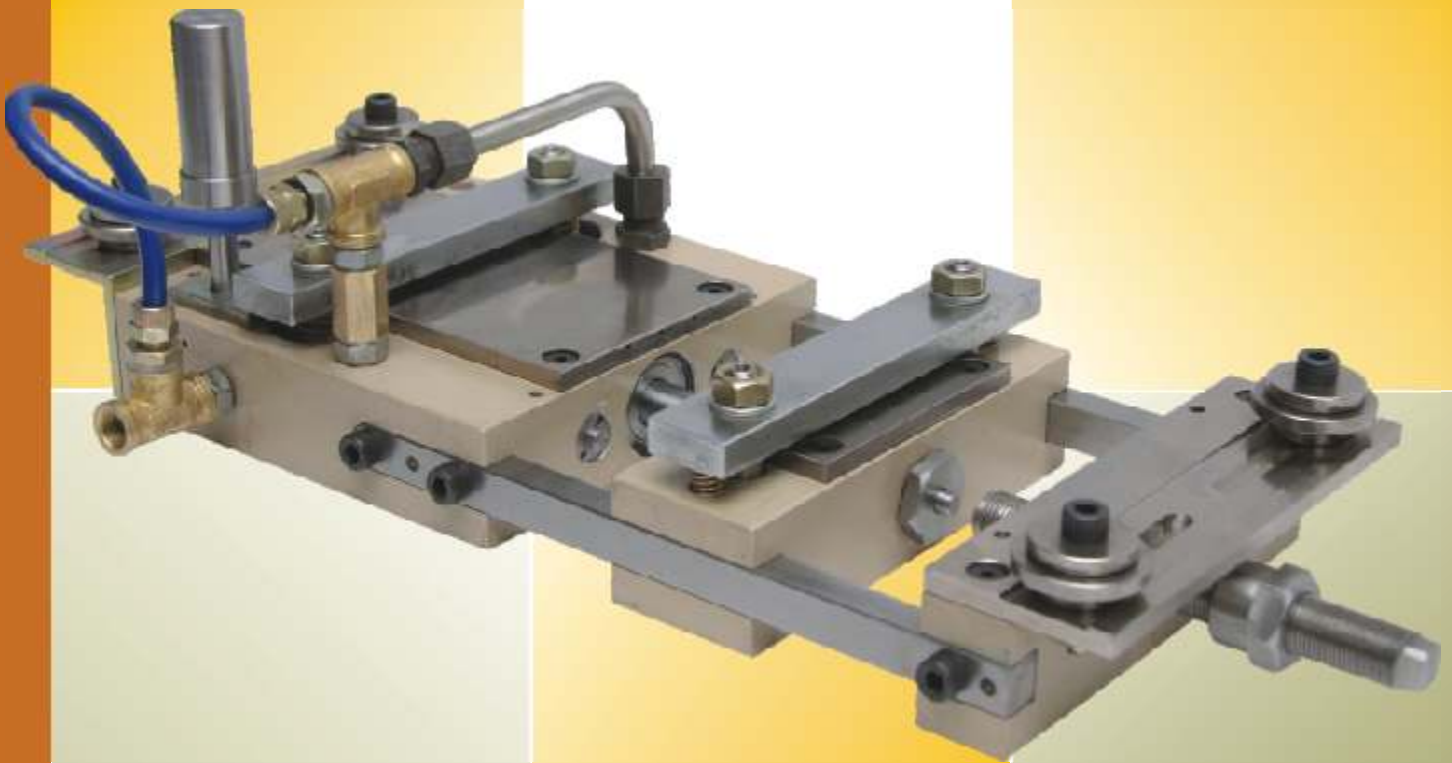


# **Jay Shanti** **Pneumatic Feeder**

High Quality Product for  
Coil-Feeding in Press-Room



## **Challenger Series**

# Challenger Series

Pneumatic Feeders to meet new competitive challenges in speed /Accuracy/ Reliability / Longer life.

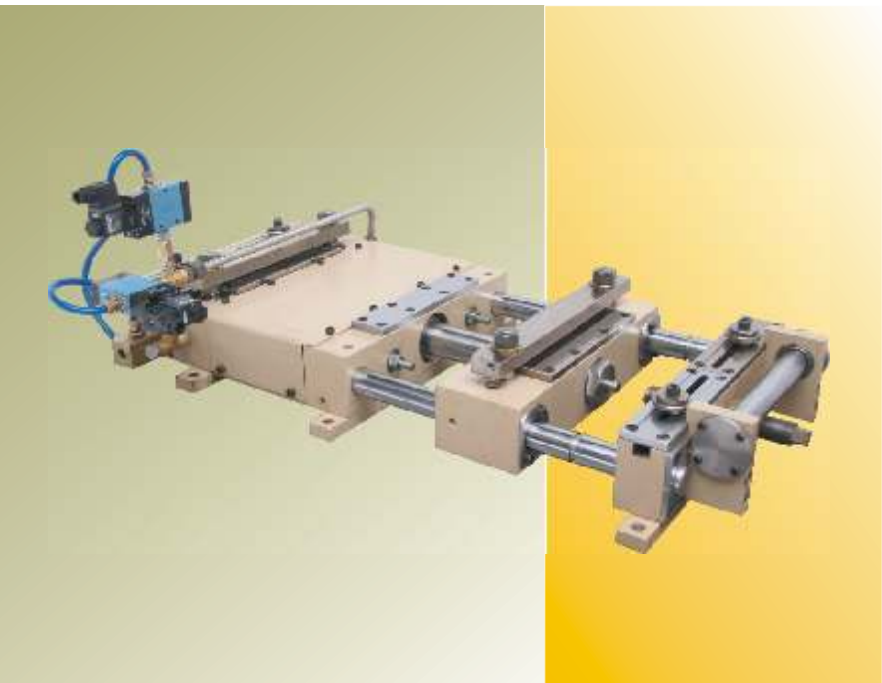
With an intense market research & practical experience in metal stamping based on regular market interaction. We have brought a range of Pneumatic Feeders to suit your exact requirement and application.

Working on customer relations management theory, we offer a complete package of problem solving solution. Our field experience staff can help in setting your complete line and can guide you to select the perfect equipments & tooling.

**Jay Shanti Pneumatic Feeders** made from special alloy aluminium & are developed in a modular way for automatic feeding of metallic & non metallic strips including paper, plastic, fiber, wires, tubing, extruded material.

Technically advanced design, selection of finest material, combined with strict quality control manufacturing, has resulted in most reliable air feeds for Indian Tough Condition.

Models available uptill 1200mm wide, 15mm thick, 1200mm pitch / stroke length.



## Special Features

- Accuracy  $\pm 0.02\text{mm}$  to  $\pm 0.04\text{mm}$  achieved in proper working conditions.
- Built in pilot release arrangement.
- 100% Additional Performance



Light Series (LS)								
Max Width in mm.	Max Stroke Length in mm	Max Strip Thickness mm	Max Strokes Per Minute	Pressure of Fix Clamps Kg.	Pressure of Mobile Clamps Kg.	Traction Force Kg.	Total Consumption CC/Stroke	Weight kg.
50	50	1	220	44	92	19	0.18	4.750
100	50	0.5	200	44	92	19	0.18	6.750

Mid Series (MS)								
Max Width in mm.	Max Stroke Length in mm	Max Strip Thickness mm	Max Strokes Per Minute	Pressure of Fix Clamps Kg.	Pressure of Mobile Clamps Kg.	Traction Force Kg.	Total Consumption CC/Stroke	Weight kg.
50	50	2.0	200	65	137	35	0.28	7.5
50	100	1.8	140	65	137	35	0.56	9.5
50	150	1.5	100	65	137	35	0.84	12.5
100	100	1.8	140	65	137	35	0.56	11.5
150	50	1.8	140	65	137	35	0.28	10.5
150	150	1.5	100	65	137	35	0.84	17.0
300	100	0.5	80	65	137	35	0.56	23.5

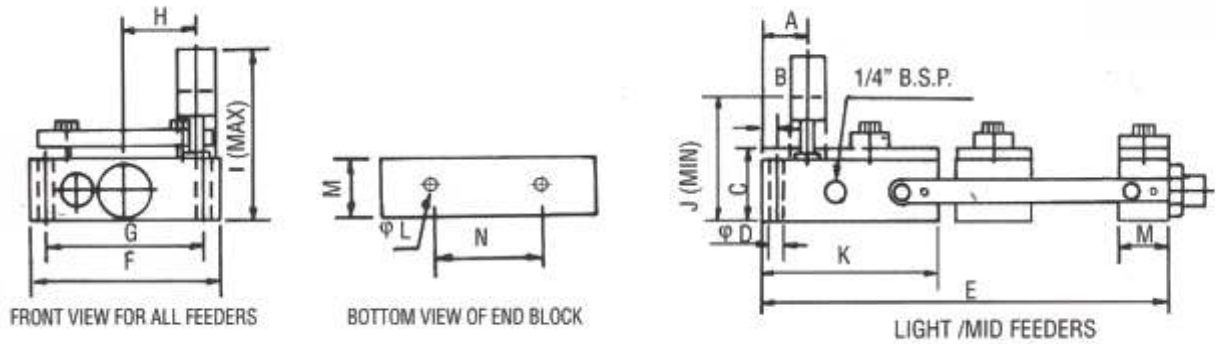
Extra Mid Series (EMS)								
Max Width in mm.	Max Stroke Length in mm	Max Strip Thickness mm	Max Strokes Per Minute	Pressure of Fix Clamps Kg.	Pressure of Mobile Clamps Kg.	Traction Force Kg.	Total Consumption CC/Stroke	Weight kg.
100	100	2.5	140	65	137	40	0.77	18.5
150	150	2.0	100	65	137	40	1.54	23.0
225	200	1.2	80	65	137	40	1.73	30.0
400	100	1.0	80	65	137	40	0.77	42.5
600	100	0.5	60	65	137	40	0.77	51.0

Heavy Series (HS)								
Max Width in mm.	Max Stroke Length in mm	Max Strip Thickness mm	Max Strokes Per Minute	Pressure of Fix Clamps Kg.	Pressure of Mobile Clamps Kg.	Traction Force Kg.	Total Consumption CC/Stroke	Weight kg.
100	100	4.0	100	126	757	120	2.2	39.0
200	200	3.0	60	126	757	120	4.5	57.0
300	300	2.0	40	126	757	120	6.75	76.0
400	400	1.5	25	126	757	120	9.0	95.0

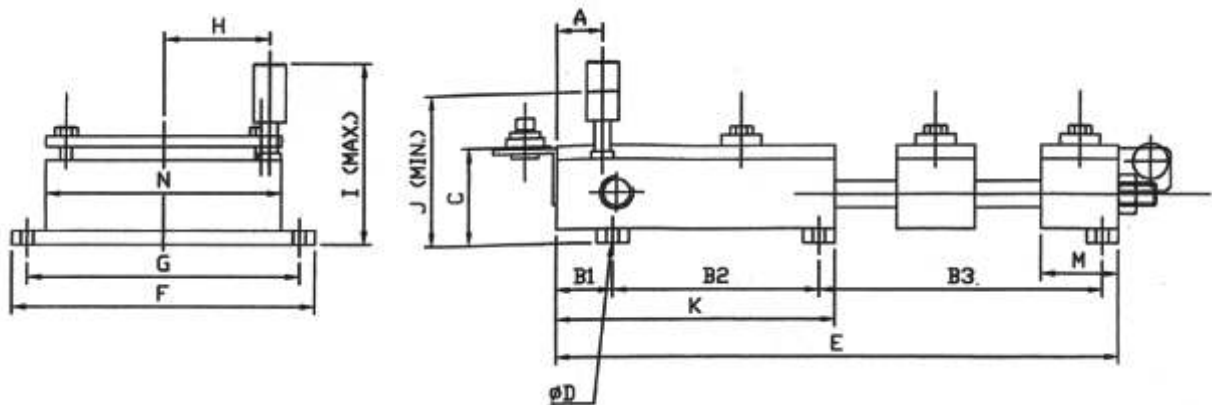
**NOTE :** EXTRA MID SERIES AND HEAVY SERIES FEEDERS DUE TO MODULAR MANUFACTURING SYSTEM CAN BE EASILY MODIFIED TO BIGGER FEEDING LENGTHS (100/200/300/400 MM)

Our old models & heavier models apart from this are manufactured Against order

*Technical specifications are indicative and subject to change to suit end application.*



TYPE	A	B	C	ØD	E	F	G	H	I	J	K	L	M	N
<b>LS</b>														
50 x 50	27	9	43	9	240	108	90	41	98	74	105	M8 x 10	30	54
100 x 50	27	9	43	9	240	108	140	66	98	74	105	M8 x 10	30	94
<b>MS</b>														
50 x 50	37	11	50	11	274	124	102	44	154	108	129	M10 x 10	30	69
50 x 100	37	11	50	11	374	124	102	44	154	108	179	M10 x 10	30	69
50 x 150	37	11	50	11	474	124	102	44	154	108	229	M10 x 10	30	69
100 x 100	37	11	50	11	374	174	152	67	154	108	179	M10 x 10	30	94
150 x 50	37	11	50	11	274	224	202	92	154	108	129	M10 x 10	30	144
150 x 150	37	11	50	11	474	224	202	92	154	108	229	M10 x 10	30	144
300 x 100	37	11	50	11	374	374	252	167	154	108	179	M10 x 10	30	294



TYPE	A	B1	B2	B3	C	ØD	E	F	G	H	I	J	K	M	N
<b>EMS</b>															
100 X 100	37	15	N.A.	350.5	74.5	11	380.5	262	232	67	179	135	188	30	202
150 X 150	37	15	N.A.	450.5	74.5	11	480.5	312	282	92	179	135	238	30	252
225 X 200	37	15	258	292.5	74.5	11	580.5	387	357	130	179	135	288	30	327
400 X 100	37	15	N.A.	350.5	74.5	11	380.5	562	532	217	179	135	188	30	502
600 X 100	37	15	N.A.	350.5	74.5	11	380.5	762	732	317	179	135	188	30	702
<b>HS</b>															
100 X 100	17	83	107	263	98.5	13	468	293	263	96.5	205	161	205	48	233
200 X 200	17	83	207	363	98.5	13	668	393	363	146.5	205	161	305	48	333
300 X 300	17	83	307	463	98.5	13	868	493	463	196.5	205	161	405	48	433
400 X 400	17	83	407	563	98.5	13	1068	593	563	246.5	205	161	505	48	533

### Manufacturing Process For Parts



CNC Machining Center



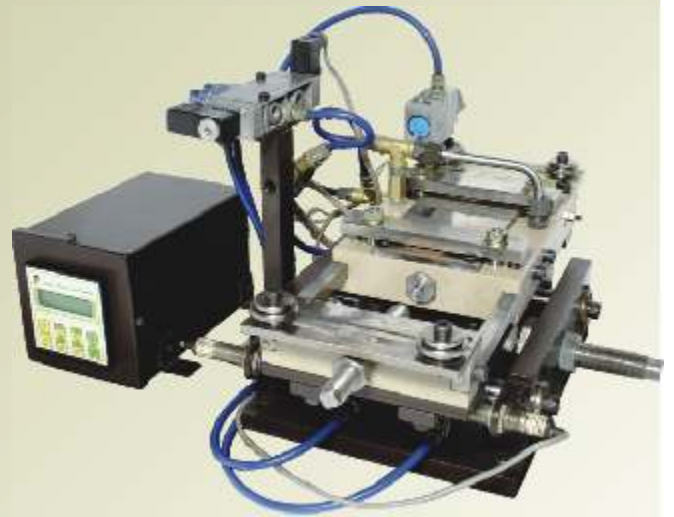
CNC Turning Center



# Optional Attachments



**Extra Heavy Series Feeder**  
Along with Cascade Rolls & Trolley type height adjustable mounting stand.

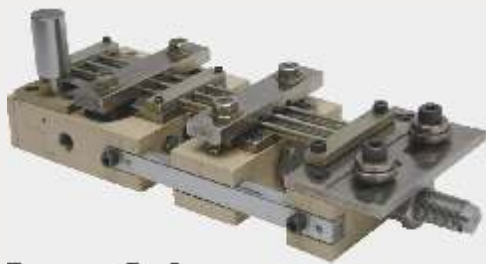


**Zig Zag Feeder**  
To feed strip on single cavity tool for better material utilisation.



**Low Cost Press Feeding Line**

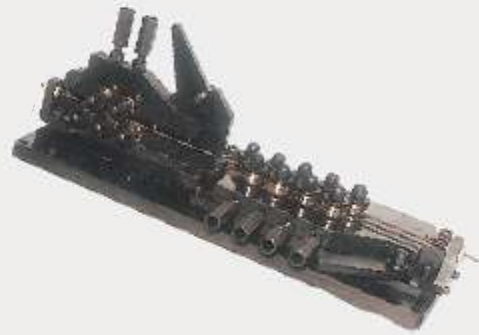
# Optional Attachments



**Thin strip Guide**  
for feeding material below 0.5mm to 0.1mm



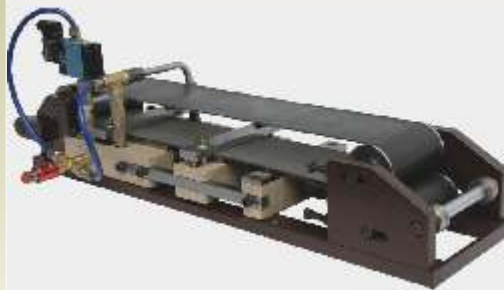
**Cam, proximity, Solenoid Valve**



Wire pull through straightener



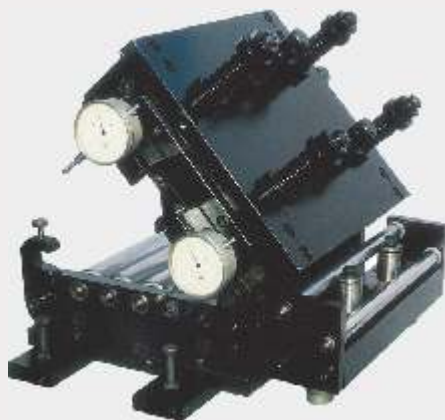
**Feeder with universal mounting stand**  
with x-y movement to clamp feeder on  
press & progressive tooling.



**Belt Guide**  
For feeding flimsy material  
& material below 0.1 mm.



**Feeder with Stand**  
with manual x-y movement



Pull through straightener



**Adjustable Cascade Rolls**  
For smooth material flow at feeder inlet.



**Transporter**  
For Smooth Components/  
scrap separator & collector  
from the Press tools.



**JAY SHANTI MARKETING ENTERPRISES**

17, Old Modella Ind. Est., Behind Automatic Elec. Co., Wagle Estate, Thane - (W) 400604, Maharashtra, India.

Telefax : 91-22-2547 1016

91-22-2547 2029

E-mail : [pressroom.india@gmail.com](mailto:pressroom.india@gmail.com)

[lajesh@bom5.vsnl.net.in](mailto:lajesh@bom5.vsnl.net.in)

Website : [www.powerpressline.net](http://www.powerpressline.net)